

Access is Everything

ACSELON™



Honeywell ACSELON™ gives you easy access to the tools and knowledge you need for a well-run building.



ACSELO



Access is everything when you run your building like a business.

If you run your building like a business—with an eye toward long-term value and a strategy for growth—you should know about the Honeywell ACSELON™ building management system. ACSELON™ gives you the timely building information and easy-to-use tools you need for integrated, flexible building control. Its useful data management applications and advanced software help you transform your facility into an efficient, cost-effective operation: a well-run building.

Control more building points—right from your workstation ACSELON™ integrates the control of all your HVAC systems—all through a single, open interface. The intelligent workstation and its browser-based Web interface lets you view more building sites, control more equipment points and access more controller data—right from your desk, without ever dialing out. That saves time and keeps your staff productive.

Use ACSELON™ to:

- Automate equipment programs
- Control and change setpoints and equipment scheduling
- Track energy use
- Generate useful graphs, charts and reports
- Receive alarm notification on your workstation, by cell phone or pager

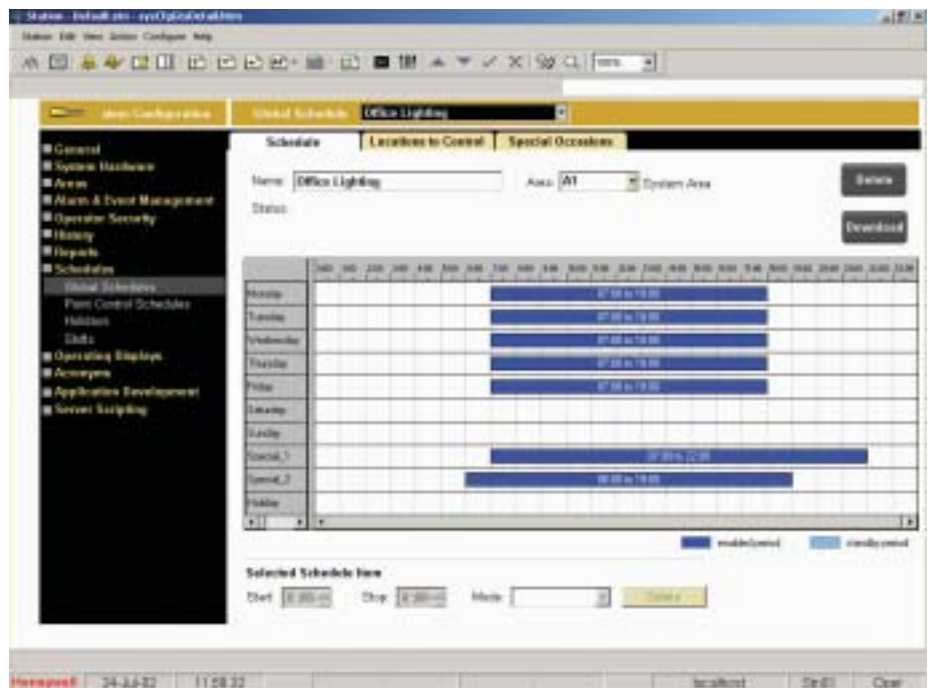
Good building management starts with access to timely and meaningful building information. And ACSELON™ delivers—simply.

ACSELON™ gives you real control

ACSELON™ gives you more than convenient workstation monitoring and control of your HVAC equipment: It gives you access to building data and meaningful reports like you've never had before. And by integrating building operations data with other management applications, you can see the big picture. Now you have the basis for better business decisions. The power to streamline costs and processes. To align operational data with management strategies. To meet occupants' specific needs. To save energy and extend equipment life.

ACSELON makes it easy to run your building like a business. Access is everything.

N™



Change schedules, set-points, and other customized building parameters with point-and-click ease—all from a single screen on the ACSELON™ workstation.

ACSELON™ adapts to you

Invest in your future with a scalable solution

It's your budget, your systems, your staff, your business strategy:

ACSELON™ adapts to you and the way you want to operate.

ACSELON™'s flexible design lets it adapt to your building applications and business needs. Its client/server architecture can be scaled up to serve you best. Do you manage a small commercial building with packaged rooftop units? Start small with two ACSELON™ workstations. As your business or tenant list grows, ACSELON™ will expand with you—affordably. Simply reconfigure your applications and add server connections and more workstations to manage multiple networked users at multiple sites—across a LAN, WAN, Internet or intranet. And ACSELON™ uses standard TCP/IP network protocols, so you can communicate across other intranet/Internet systems and PC networks, too.

Open technology simplifies and endures

Are you open for business? ACSELON™ is. Because it incorporates many open industry standards, ACSELON™ gives you the flexibility to use a variety of third-party controllers, devices and communications interfaces without requiring complex communications gateways. That simplifies configuration, minimizes installation time, and keeps your growth options open.

ACSELON™ supports these open industry standards:

- LonMark® open communications protocol
- BACnet, the ASHRAE standard, for BACnet client functionality
- Honeywell's EXCEL 5000® OPEN system and its family of controllers

Are your HVAC points controlled by a patchwork of components and devices? No problem: it all comes together on your ACSELON™ workstation.

LonWorks®, part of the LonMark®-based open communications protocol, allows ACSELON™ to seamlessly control a network of interoperable devices from multiple vendors.



ACSELON™ workstation and data server: Simple user interfaces, understandable graphics. ACSELON™ was designed for easy use by operators without an engineering or programming background:

- Seeing is understanding: Windows®-based graphics clearly define devices and systems, simplify navigation and information retrieval
- Point, click, and go—directly to detailed building information
- Seamlessly integrates multiple equipment data streams for a complete building snapshot



ACSELON™ workstation



Air handling units



Chiller plant



Zone control

ACSELON™ is part of the enduring EXCEL 5000® OPEN system architecture, sharing a technology platform that includes unmatched DDC control versatility. You benefit from open integration over a wide-range of HVAC building applications—from dedicated equipment control to intelligent sensors—manufactured by Honeywell or others.

A suite of tools to troubleshoot, analyze, plan and predict

ACSELON™'s advanced suite of software tools make it easy to gather, organize and analyze building information. Now you can take steps to prevent problems and actively plan for better building outcomes.

Customizable software tools include:

- Alarm management
- Historian
- Global scheduling
- Trending
- Reporting

More responsive alarm management

ACSELON™ alarm programs make it easy to determine your alarm priorities and respond to alarms more rapidly.

- Easily define abnormal building events
- View and segregate alarms by priority, area or status
- Receive immediate audible notification
- See dedicated alarm line on standard workstation display pages
- Select alarm pager and e-mail notification options

More meaningful reports

ACSELON™'s advanced software and data-mining capabilities help you gather, organize and analyze data in many ways.

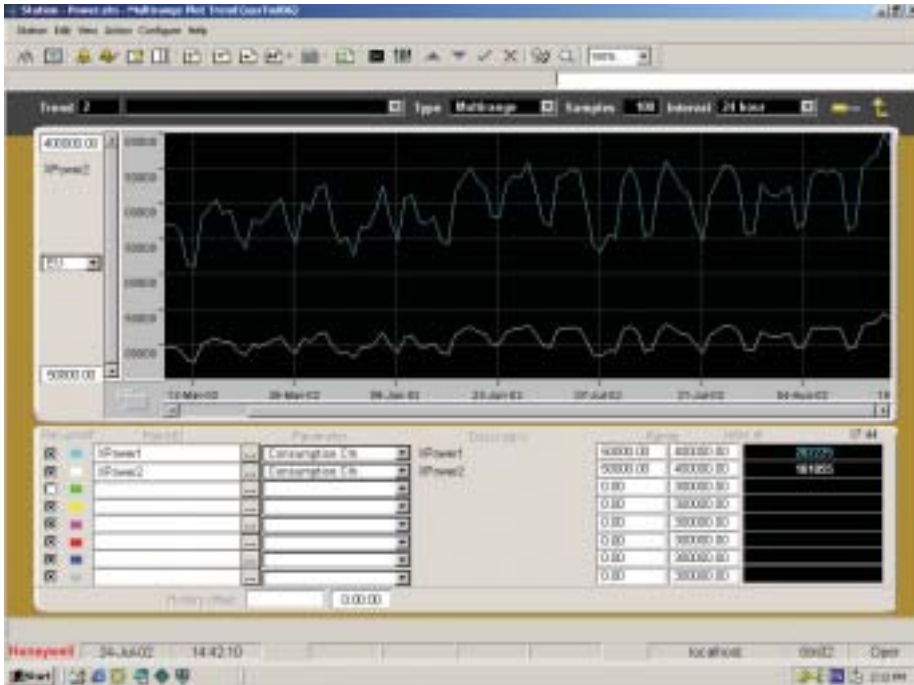
- Collect data in intervals from one second to one day
- Make trend comparisons for preventive action
- Benchmark performance of multiple buildings
- Develop cost-of-operation spreadsheets
- Integrate building data into other management reports
- Collect standard, fast or extended history data on thousands of points
- Automatically archive and retrieve data for analysis and trending
- View, copy and paste trend data from ACSELON into Microsoft Office applications

Date	Time	Area	Point ID	Priority	Description	Value	
26-Jul-07	11:29:14	25	r5enote5enote0	1000	1000	80.1	
26-Jul-07	11:29:14	25	r5enote5enote0	1000	1000	80.3	
26-Jul-07	11:29:17	25	r5enote5enote0	1000	1000	81.05	
26-Jul-07	11:29:17	25	r5enote5enote0	1000	1000	84.05	
26-Jul-07	11:29:19	25	r5enote5enote0	1000	1000	81	
26-Jul-07	11:29:19	25	r5enote5enote0	1000	1000	81	
26-Jul-07	11:29:20	25	r5enote5enote0	1000	1000	80.35	
26-Jul-07	11:29:24	25	l2wee000Flow	1000	1000	WW Air Flow	097 CFM
26-Jul-07	11:29:24	25	l2wee000Flow	1000	1000	WW Air Flow	100 CFM
26-Jul-07	11:29:24	25	l2wee000Flow	1000	1000	WW Air Flow	097 CFM
26-Jul-07	11:29:24	25	l2wee000Flow	1000	1000	WW Air Flow	100 CFM
26-Jul-07	11:29:24	25	l2wee000Flow	1000	1000	WW Air Flow	097 CFM
26-Jul-07	11:29:24	25	l2wee000Flow	1000	1000	WW Air Flow	100 CFM
26-Jul-07	11:29:26	25	r5enote5enote0	1000	1000	100 CFM	8.08
26-Jul-07	11:29:26	25	l2wee000Flow	1000	1000	WW Damper Position	18 %
26-Jul-07	11:29:26	25	l2wee000Flow	1000	1000	WW Damper Position	18 %
26-Jul-07	11:29:26	25	l2wee000Flow	1000	1000	WW Damper Position	18 %

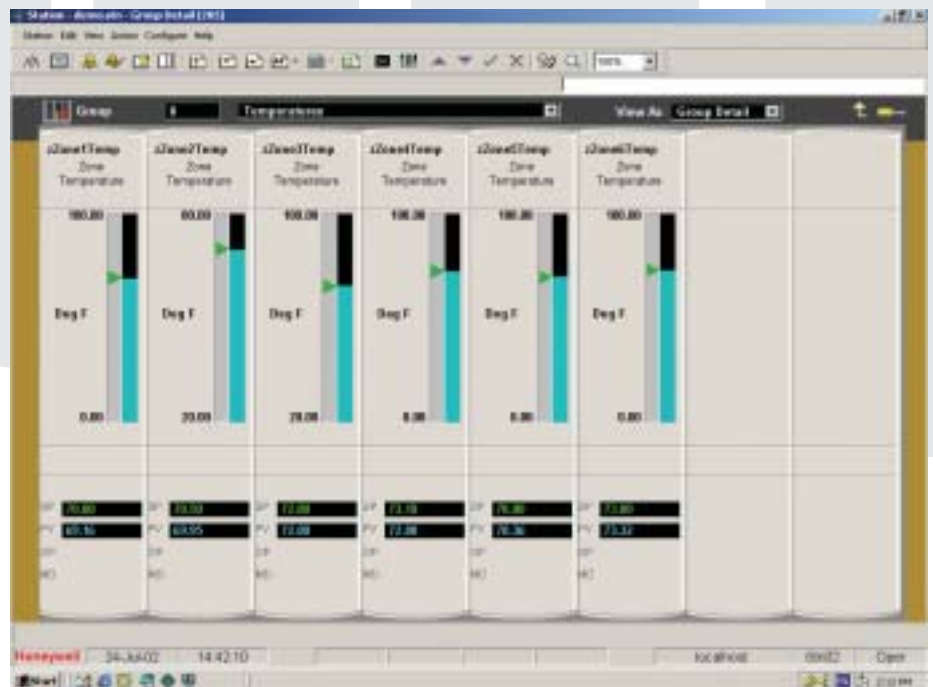
Access is everything.

ACSE

ACSELON helps you prioritize your critical alarms and respond accordingly.



Trend and benchmark areas, floors or even buildings to increase future productivity.



Text graphics improve productivity, especially since they are quick to set up.

LON™

ACSELON™ is a trademark of Honeywell Inc.
EXCEL 5000® is a registered trademark of Honeywell Inc.
LonMark® and LonWorks® are registered trademarks of Echelon Corporation
Microsoft® and Windows® are registered trademarks of Microsoft® Corporation

Honeywell

Automation & Control Solutions

In the US: Honeywell, 1985 Douglas Drive North, Golden Valley, MN 55422-3992

In Canada: Honeywell Limited, 35 Dynamic Drive, Toronto, Ontario M1V 4Z9

