



Control made easy: just log on!



Get convenient, versatile building control with:

- Easy Internet access
- Multi-user control
- Plug-and-play setup

Introducing the Honeywell Web Building Manager (Excel 15B™)

The versatile Web-based controller interface for the Light Commercial Building Solution.

The way you access your building devices makes a difference in how well your building runs. It's that simple. And so is the versatile new Honeywell Web Building Manager.

The Web Building Manager works with the Honeywell Light Commercial Building Solution™ to reduce energy and operating costs in small- to medium-sized buildings—better than ever before. Here's why: Now, facility managers and even tenants without HVAC training can use the Web Building Manager to more easily access and monitor building control points through the Internet or their local intranet. So it's easier than ever to optimize proven energy-saving features like time-of-day scheduling, occupancy scheduling, and more.

Convenient and easy

Do you want to give more of your building staff, tenants, and others convenient access to your building systems? It's easy! Just log-on from any PC—anywhere in the world—to view and adjust scheduling, trending, setpoints and alarms—without the restrictions of dial-up access. Without limits on speed, numbers of users, or points controlled. Tap into the comfort and cost-saving features of your LCBS™—faster and more easily with the Web Building Manager.

Building management features

Use the Web Building Manager to view, monitor and change these building management features:

- View and modify time-of-day schedules
- Modify setpoints and command occupied bypass
- Trend points on any of the zone or plant controllers
- Schedule zones to the various occupancy patterns of the building tenants
- Create alarms by polling point data and monitoring alarms on controllers
- Time stamp with real-time clock



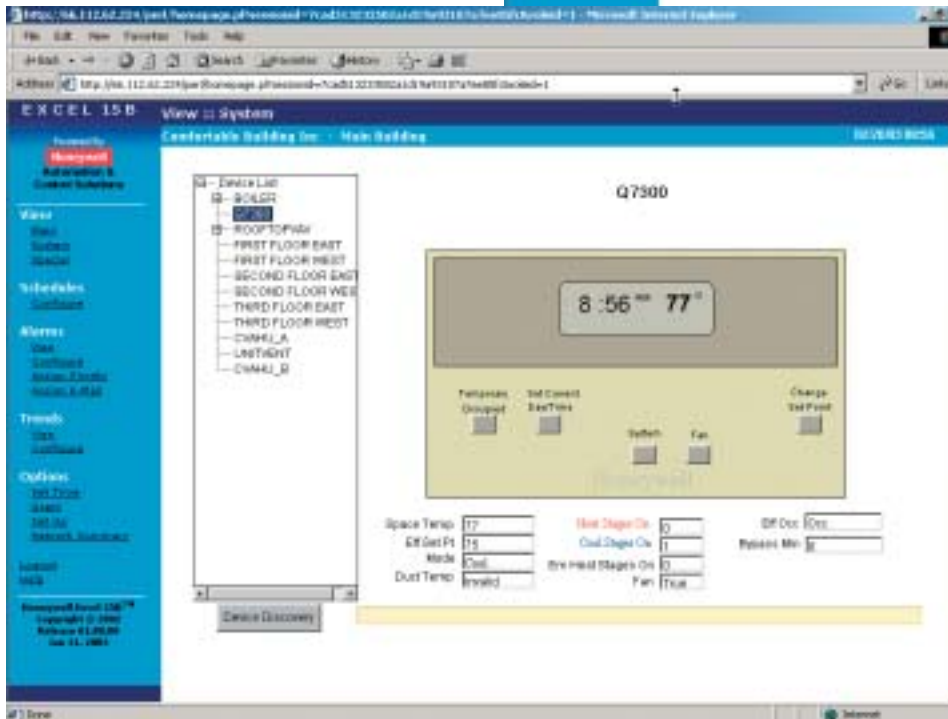
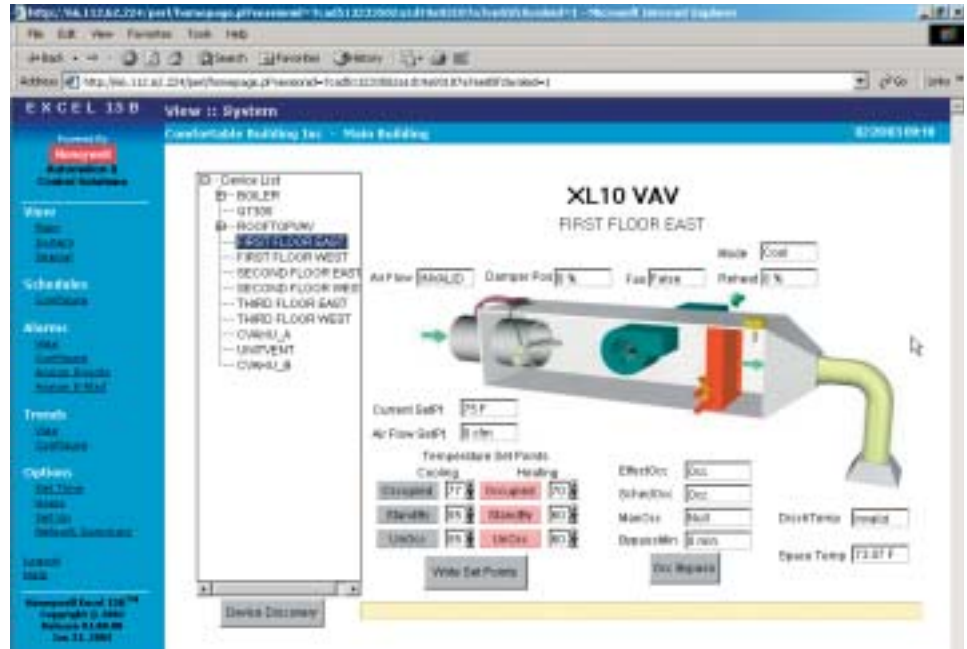
View and modify time-of-day schedules conveniently, from any PC location.

Multi-user Internet access

The Web Building Manager allows multi-level access through the Internet or via a local intranet for greater privacy and security. Customize access by selecting from seven different access levels. Users can see and monitor building parameters conveniently, from any PC, and receive controller alarms by e-mail.

Graphics simplify multiple-point monitoring

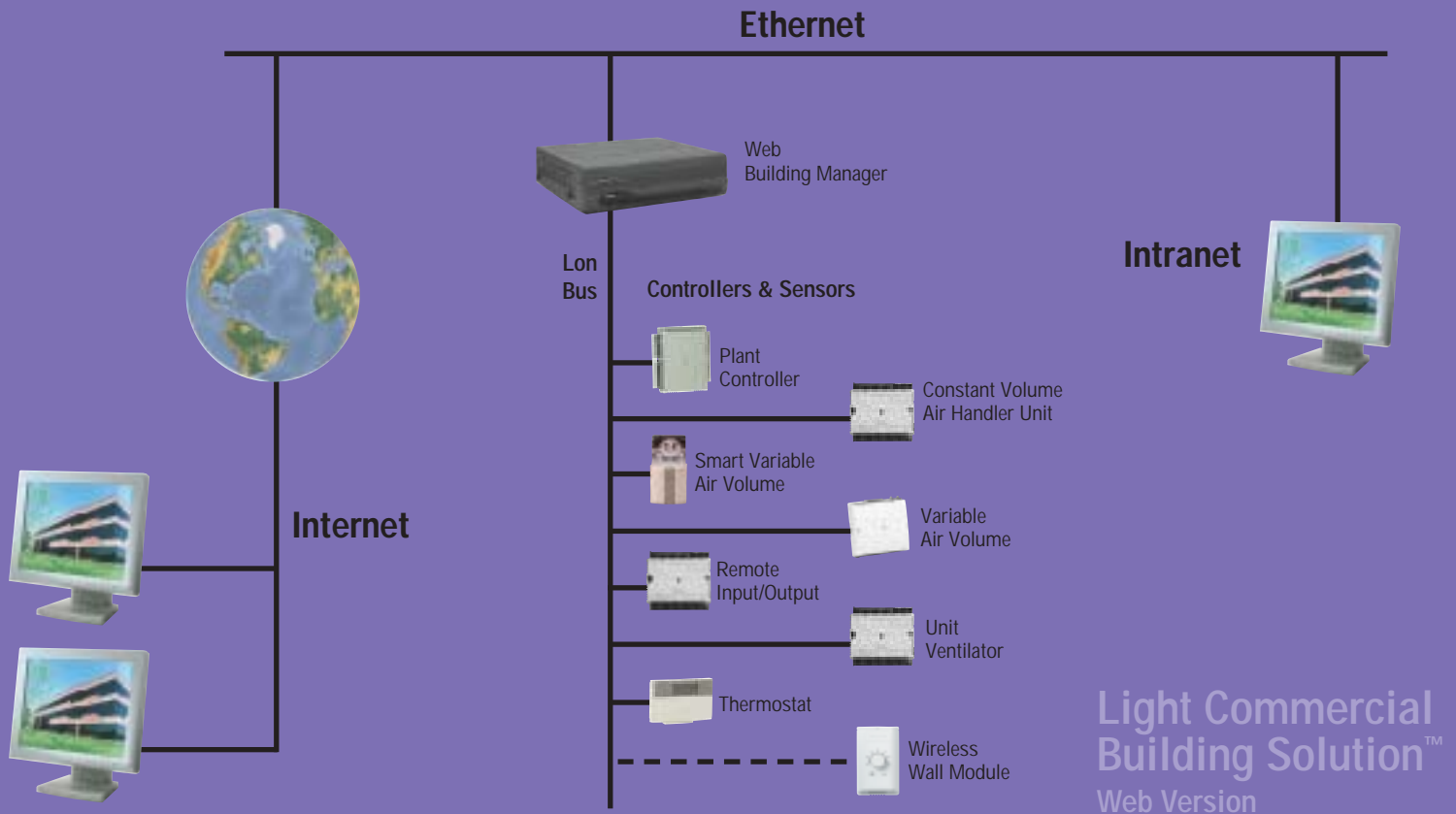
The Web Building Manager supports multiple types of controllers as well as communicating commercial programmable thermostats. The predetermined graphics make it easy to see and understand multiple devices and points, including setpoints, data measured, and occupied bypass. Or import your own graphics to customize your view of controller status. The Web Building Manager can create up to 20 special displays.



View and change settings on up to 80 controllers. Use provided graphics or create/import your own.

Change set points and occupancy schedules on multiple communicating commercial programmable thermostats.

Building Management System Architecture



LCBS and Excel 15B Web Building Manager

Convenient, Web-based control of building management functions

Plug-and-play operation

The Web Building Manager has a self-discovery feature that makes system set-up simpler than ever. It automatically finds all existing devices on the LONWORKS® network to create its own device status list. And because it's Web-based, there's no software to buy or install. Standard graphics are pre-installed.

Just plug it in, set up the IP address and connect. You're off and running a more efficient, cost-effective building.

The Excel 15B Building Manager communicates over Ethernet (Internet) via the 78 kilobaud Echelon® LONWORKS® network, using a built-in Serial LONTALK® Adapter (SLTA). It can support up to 80 Excel 10 and Excel 15C controllers, and T7300 communicating commercial programmable thermostats.

Excel 10, Excel 15B, Excel 15C, T7300 and LCBS are trademarks of Honeywell International Inc. LONWORKS®, LONTALK® and Echelon® are registered trademarks of Echelon Corporation.

Automation and Control Solutions

In the US: Honeywell, 1985 Douglas Drive North, Golden Valley, MN 55422-3992
In Canada: Honeywell Limited, 35 Dynamic Drive, Toronto, Ontario M1V 4Z9



Honeywell

